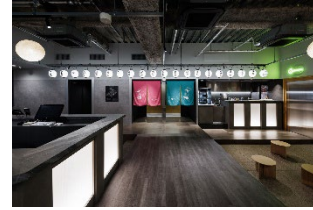


Project: Osaka Sauna DESSE

Design Team: OSTR

Size: 900 m²

Location: Osaka , JAPAN



Feature:

Project - A new sauna facility called Osaka Sauna DESSE has opened in the heart of Osaka, designed by the Tokyo architectural duo OSTR/Sho Ota and Ryosuke Takei. Located on the 4th floor of an 11-story tenant building, the facility was conceived within the constraints of a closed-off environment lacking outdoor space.

The designers aimed to create a sauna experience as an "extension of daily life", adopting the concept of a "garden-like architecture" with diverse circulation paths. Seven distinctly characterized saunas are scattered across the floor, connected by a "river-like landscape".

The saunas offer varying distances to this interpretive garden, with some featuring large windows framing scenery, others allowing one to plunge directly into a "river", and others with bench seating evocative of a riverbank. The baths and plunge pools traverse the rooms like a continuous waterway, with bridges, stepping stones, floating huts and embankments emerging to complete the riverine atmosphere resonating with the "garden-like architecture" concept.

The lounge area is composed simply of level changes in the floor plane, leaving the space open for users to inhabit it freely - pondering which sauna to visit next, or casually sitting down or using surfaces as tables, continuing the experience of the city itself. By gradually transitioning from the urban exterior upon arriving at the 4th floor, Osaka Sauna DESSE aims to provide an experience of "wonderful daily life".

Design Team - Founded in 2019, OSTR is an architectural design firm with offices in Osaka and Tokyo. Led by principals Sho Ohta and Ryosuke Takei, both licensed architects, the

practice is dedicated to crafting joyful buildings and envisioning new norms for the built environment.

OSTR takes a first-principles approach, rigorously questioning assumptions about necessary spaces and functions while keeping client needs as a baseline. Their proposals look beyond immediate requirements to how architecture can best serve long-term value. Adept at cost management, OSTR deftly navigates complex projects with flexibility, maintaining frequent construction site visits to guide projects towards optimal resolutions.

With a full-service offering spanning feasibility studies, concept design, documentation, and construction administration, OSTR excels at integrating architecture, interiors, landscapes, and product design. Their diverse portfolio encompasses residential, commercial, institutional, and urban planning projects realized through comprehensive vision and rigorous technical execution.

Championing architecture's societal impact, OSTR engages in community development initiatives, shares their knowledge through academic teaching, and consults on urban design strategy. Their human-centered approach elevates design as an catalyst for more vibrant, sustainable collective experiences.